

Anti-H_CEACAM6(CD66c) hIgG1 Antibody(Tinurilimab)

Product Information

GM-30166AB-10	10 µg
GM-30166AB-100	100 µg
GM-30166AB-1000	1 mg

Antibody Information

Species Reactivity	Human
Clone	Tinurilimab
Source/Isotype	Monoclonal human IgG1, κ
Application	Flow cytometry
Specificity	Detects CEACAM6.
Gene	CEACAM6
Other Names	NCA; CEAL
Gene ID	4680(human)
Background	Carcinoembryonic antigen cell adhesion molecule 6 (CEACAM6) is a cell adhesion receptor of the immunoglobulin-like superfamily (3 Ig-like domains), known to interact with other CEACAMs through cis and transforming dimers via their N-terminal IgG V-domain. CEACAM6 is anchored to the cell membrane via a glycosylphosphatidylinositol (GPI) anchor at its C terminus and regulates cell adhesion, proliferation, signaling in cancer, and immunity. CEACAM6 elaborates an extracellular matrix (ECM) interactome via homotypic and/or heterotypic binding, promoting fibronectin (FN1)-integrin (ITGA1 and ITGB1) interactions. Over-expression of CEACAM6 is documented in many human epithelial (e.g., colorectal, breast, pancreatic ductal adenocarcinoma (PDA)) and hematologic malignancies (e.g., multiple myeloma and acute lymphoblastic leukemia).
Storage	Store at 2-8°C short term (1-2 weeks).Store at ≤ -20°C long term.Avoid repeated freeze-thaw.
Formulation	Phosphate-buffered solution, pH 7.2.
Endotoxin	< 1 EU/mg, determined by LAL gel clotting assay

Data Examples

Flow cytometry

The recommended usage range is 0.5-4 μg per test. H_CEACAM6(CD66c) CHO-K1 Cell Line (Catalog # GM-C19188) was stained with Anti-H_CEACAM6(CD66c) hIgG1 Antibody (Catalog # GM-30166AB) or isotype control antibody, followed by anti-Human IgG APC-conjugated Secondary Antibody.

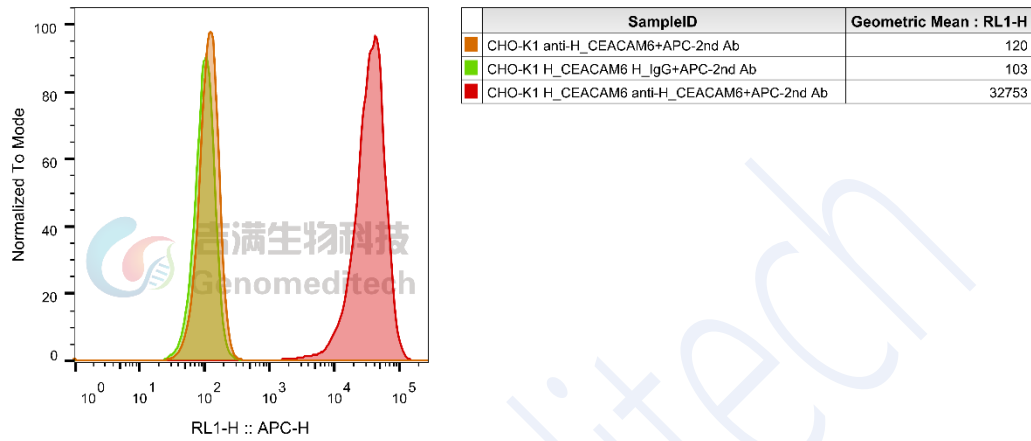


Fig. 流式验证结果